

# ANNUAL REPORT 2025



[www.networkofwellbeing.org](http://www.networkofwellbeing.org)

# DIRECTOR'S STATEMENT

The Network of Wellbeing (NOW)'s vision is of people and the planet thriving together. We connect people, support projects and inspire action for the wellbeing of people and the planet. We do this through events, network-building, our retreat venue Eden Rise, and community projects, such as our Share Shed – a mobile library of things.

2025 was potentially a game-changing year for us. In April, after 18 months of hard work, we were awarded £252,316 over four years by the National Lottery Community Fund for Happier People and Stronger Communities through Share and Repair in South Devon (p.8). This project secures the future of the Share Shed and has allowed us to use core funds to appoint a new Network Development Manager.

## **Meanwhile, we're proud that in 2025, we:**

- Continued our sponsorship of the Resurgence Festival of Wellbeing;
- Made 1416 loans from the Share Shed, our mobile library of things;
- Attracted 700 people to the Woolfest in Buckfastleigh to celebrate all things woollen;
- Helped relaunch a repair café in Ivybridge;
- Accommodated 51 retreats for over 1000 people at Eden Rise, our haven for wellbeing in South Devon;
- Saved 1.8 tonnes of carbon dioxide through our solar panels at Eden Rise; and
- Recruited three new people to join our dynamic Trustee team.

## **We're really excited for 2026!**



**ROGER HIGMAN**

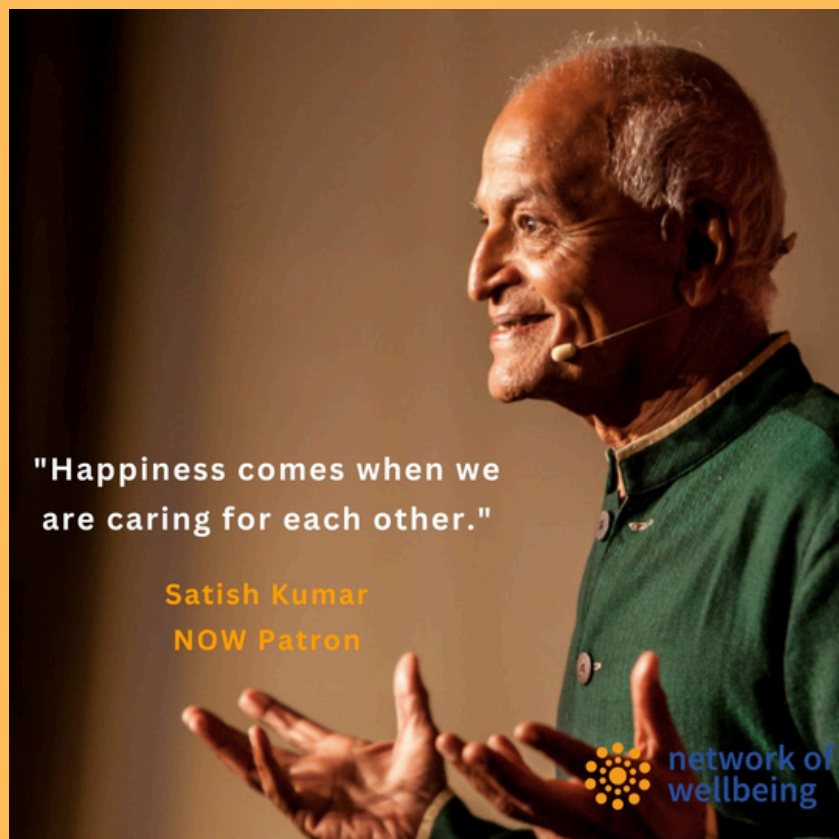
**DIRECTOR, NETWORK OF WELLBEING**



# CONTENTS

**In this report, you'll find updates on:**

• <b>The Network</b>	Page 4
• <b>Our Online Networks</b>	Page 5
• <b>The Share Shed: A Library of Things</b>	Page 6
• <b>Share Shed Highlights</b>	Page 7
• <b>Happier People &amp; Stronger Communities</b>	Page 8
• <b>Ivybridge Repair Cafe</b>	Page 9
• <b>Woolfest</b>	Page 10
• <b>Eden Rise, our Cherished Retreat Venue</b>	Page 11
• <b>Eden Rise Highlights</b>	Page 12
• <b>Thank You</b>	Page 13





# THE NETWORK

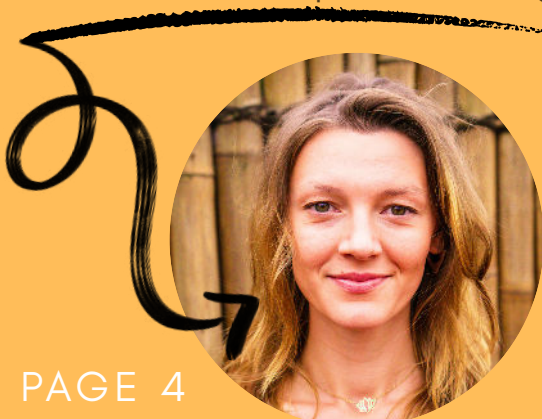


**Building Wellbeing Together is at the heart of our mission and we greatly value the links we've made with wellbeing practitioners and change-makers from all over the UK.** We connect people through our website, newsletter and social media and events. Our 'Building Wellbeing Together' Facebook group now has over 900 followers, while almost 5000 people subscribe to our monthly e-newsletter!

We love to feature other people's work as well as our own and we're grateful to all of you who submitted articles for the website and newsletter, such as Nic Marks (above left). We love to support projects and share events from our followers, such as Heidi Rose's *"Way of Council"* (above right).

Lack of funding limited our ambition to bring our network together in 2025 – through online and in person events – though we did continue our sponsorship of the Resurgence Festival of Wellbeing and we were also pleased to host a Hope in Action retreat with our friends at Resurgence (both next page).

Late in the year, we found funds to appoint Molly Haywood Newberry as our new Network Development Manager to lead this work.



**We expect, in 2026, to do much more!**

# Hope in Action Retreat

7th–9th March 2025 • South Devon



**Embody your role and purpose in a changing world**

Join us for a nourishing weekend that will hold and support you in rising to the great challenges and possibilities of our time. This retreat will braid together solo reflection time, Nature connection, group work and mindfulness. Led by experienced facilitators **Georgie Gilmore** and **Flo Scialom**.

Info & tickets: [resurgenceevents.org](https://resurgenceevents.org)



# Festival of Wellbeing

Sat 4 Oct 2025 • 10am–5pm BST, Online, Zoom



## OUR ONLINE NETWORKS

**In 2025, we maintained our reach and engagement through our online and social media communities, consisting of thousands of people, all over the UK and beyond:**



**6.5K ON FACEBOOK**  
+ 907 FOLLOWERS ON BUILDING WELLBEING TOGETHER FB GROUP



**1K FOLLOWERS ON LINKEDIN**



**4.8K SUBSCRIBERS TO OUR MONTHLY NEWSLETTER**





**WE PLAN TO MIGRATE 17K FOLLOWERS FROM TWITTER/X OVER TO BLUESKY**



**2.3K FOLLOWERS ON INSTAGRAM**



**800 SUBSCRIBERS ON YOUTUBE**





## 10 Most Popular Items

**Pole Hedge Trimmer**  
from 15.50/week



**Pressure Washer**  
from £14/week



**Party Kit from £4/week**



**Gazebo from £20/week**



**Drill from £4/week**



**Strimmer from £4.50/week**



**Lawnmower**  
from £9/week



**Trestle Table**  
from £5/week



**Carpet Cleaner**  
from £40/week



**Dehumidifier**  
from £6.50/week



# SHARE SHED A LIBRARY OF THINGS

**This pioneering project offers over 350 items such as tools, camping and gardening equipment, household appliances, and much more, for people to borrow at low cost, on a weekly basis.**

Travelling in its bespoke van, a real 'shed on wheels', this initiative in south Devon helps people save money, storage space and reduce waste as well as general consumption.

Along with promoting access over ownership, and promoting collaboration, the Share Shed hosts a range of repair and skillshare events in order to further support the wellbeing of people and the planet.

# HIGHLIGHTS OF THE SHARE SHED IN 2025

- **Served seven locations weekly:** Ashburton, Dartington, Ivybridge, Totnes, South Brent, Kingsbridge and Buckfastleigh.
- **Welcomed 556 new members (including 74 low-income from households who benefited from our free membership),** bringing our total membership to 3,698 since opening.
- Facilitated **1,416 loans**, making it a total of 7,512 items borrowed so far.
- **Secured £252,316 to help sharing and repairing across South Devon,** thanks to a Reaching Communities grant from the National Lottery Community Fund.
- Hosted the **WoolFest in Buckfastleigh**, in collaboration with the Woolly Nanas, attracting **more than 700 attendees** for a day of fun and learning about wool.
- Helped revive the **Ivybridge Repair Café** in partnership with CAG Devon, offering a regular space for the community to fix and mend items together.
- Took part in **over 10 outreach events** to raise awareness about sharing and repairing in South Devon.
- Expanded our fantastic **team of volunteers and hired a Project Manager Assistant (Michael Park)**, who keep the Share Shed running smoothly.
- **The most exiting addition to our inventory** was a Reminiscence/Memory Box designed especially for people living with dementia and older adults, kindly sponsored and curated by Conversation Works CIC.
- **Held two skilshare events in Buckfastleigh:** Tool Sharpening for Beginners and Basic Clothes Mending Skills.





# HAPPIER PEOPLE AND STRONGER COMMUNITIES

**In 2025, we were awarded £252,316 over four years by the National Lottery Community Fund to deliver Happier People and Stronger Communities through Share and Repair in South Devon.**

This project secures the future of the Share Shed and enables us to expand our work supporting sharing, repairing and community connection to build wellbeing and save people money.

## **Over the next four years, the project will:**

- Reach thousands more people with affordable borrowing
- Offer free memberships to low-income households, alongside a pay-it-forward scheme
- Support Repair Cafés and deliver practical skill-sharing workshops
- Host community events that strengthen connection and local pride
- Reduce waste and carbon emissions through reuse rather than replacement
- Grow our volunteer base and strengthen local partnerships.

We are deeply grateful to the National Lottery Community Fund, National Lottery players, and to our volunteers, members and partners who make this work possible.





# IVYBRIDGE REPAIR CAFÉ

In November, we hosted a public consultation, with CAG Devon and Libraries Unlimited, to explore the community's interest in reviving a Repair Café in Ivybridge - after an earlier Repair Café, hosted by the Makers Mews project, closed in late 2024.

The consultation at Ivybridge Library attracted over 25 participants, all keen to help shape a more sustainable and resilient community through repairing and reusing everyday items.

A core group of volunteers has now formed, and the Ivybridge Repair Café is set to be relaunched in February 2026.

It will offer a welcoming space for local residents to come together, share skills, fix broken items and reduce waste - and join a growing network of Repair Cafes in South Devon



The poster features a green background with a yellow banner at the top. In the center is a yellow icon of a hand holding a wrench and a screwdriver. Below this, the text 'IVYBRIDGE REPAIR CAFE' is written in large, bold, white capital letters, followed by 'COMMUNITY CONSULTATION' in smaller, bold, white capital letters. Below this, a line of text reads: 'Discover the world of Repair Cafés, their positive impact on communities, and why we need one in our town.' A horizontal line separates this from the event details: '4th November | 7pm to 8.30pm | Free' in yellow, followed by 'Ivybridge Library' in yellow, 'The Watermark, Erme Court, Leonards Road' in yellow, and 'Ivybridge, PL21 0SZ' in yellow. At the bottom, a line of text reads: 'Learn how these volunteer-driven initiatives work to reduce waste, save money, and foster a culture of repair and reuse, and how you can get involved.' At the very bottom are five logos: ShareShed, Libraries Unlimited, Community Action Devon, network of wellbeing, and COMMUNITY FUND.

**IVYBRIDGE  
REPAIR CAFE  
COMMUNITY CONSULTATION**

Discover the world of Repair Cafés, their positive impact on communities, and why we need one in our town.

**4th November | 7pm to 8.30pm | Free**  
**Ivybridge Library**  
**The Watermark, Erme Court, Leonards Road**  
**Ivybridge, PL21 0SZ**

Learn how these volunteer-driven initiatives work to reduce waste, save money, and foster a culture of repair and reuse, and how you can get involved.







WoolFest Buckfastleigh 2025

# WOOLFEST IN BUCKFASTLEIGH

**In May, 2025, we hosted our third WoolFest in Buckfastleigh (Devon), in partnership with the Wool Hub CIC.**

This free, family event aimed to celebrate the value of working with wool, a sustainable, natural material.

More than 700 people came to try out spinning, weaving, felting and dyeing and watch expert makers practice their crafts. There were hands-on workshops, demonstrations, talks about wool, and even a chance to watch sheep-shearing up close. It was educational and heartwarming, showcasing the beauty and importance of wool in Buckfastleigh, an 'Ancient Woollen Town'.





## EDEN RISE: A VENUE FOR ENVIRONMENTAL STEWARDSHIP

**Set in two converted 200-year-old barns, our retreat venue offers a space dedicated to integrating wellbeing and environmental care.**

In 2025, we introduced new reuse and recycling systems to build on the solar energy investment we'd made the year before – and demonstrate how community wellbeing and ecological responsibility can work in harmony.

Guests are invited to experience the restorative power of this tranquil environment, confident that their stay contributes to long-term environmental and community benefit.

Eden Rise warmly welcomes guests at all times of the year.

# HIGHLIGHTS FROM EDEN RISE IN 2025

- Accommodated 51 retreat groups throughout the year
- Welcomed over 1,000 guests to our restorative venue
- Formalised our Nature Connection retreat programme
- Established a kitchen herb garden for guest use
- Refurbished and repainted the sauna facility
- Saved 1,853 kg of CO<sub>2</sub> emissions by utilising our solar panels
- Contributed 2,000 kWh back to the green energy grid
- Grown our external housekeeping team
- Welcomed Adrian as our new caretaker



“

"I HAVE BEEN RUNNING  
EVENTS AND RETREATS FOR  
OVER 20 YEARS, AND EDEN  
RISE STANDS OUT TO ME AS A  
WELL-RUN AND RELIABLE  
RETREAT CENTRE."

Richard Parker, Director of  
Emerging Hearts

”





**Annabel**  
Eden Rise Bookings  
Administrator



**Adrian**  
Eden Rise Caretaker



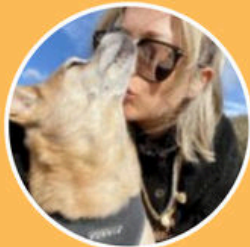
**Mirella**  
Project Manager



**Molly**  
Network Development



**Mark**  
Share Shed Manager



**Amy**  
Eden Rise Caretaker



**Hannah**  
Fundraiser



**Roger**  
Director



**Sylvie**  
Eden Rise Manager

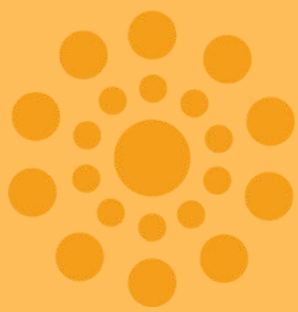


**Michael**  
Asst. Manager (Share Shed)

# THANK YOU

We would like to say a huge thank you to all those who have supported and engaged with our work in 2025, including our Trustees, volunteers and everyone who has supported us, attended our events, borrowed from the Share Shed, used Eden Rise, followed our work online, or generally engaged with wellbeing for people and the planet. We look forward to continuing to connect with you throughout 2026.

**Thank you again for being a part of this journey with us.**



# network of wellbeing

c/o Eden Rise, Sandwell Barns, Harberton,  
Totnes, Devon, TQ9 7LJ, United Kingdom  
[www.networkofwellbeing.org](http://www.networkofwellbeing.org)  
[info@networkofwellbeing.org](mailto:info@networkofwellbeing.org)

